

# CHANDLER SERIES BY GENESIS



Artist rendering of the Cherry Hill shown with garage built by others. Actual home may vary from the artist rendering.

## CHERRY HILL



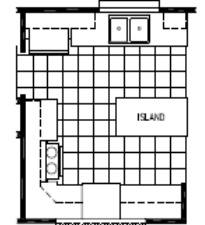
### MODEL 528A

APPROX. 1387 SQ. FT.  
3 BEDROOM, 2 BATH

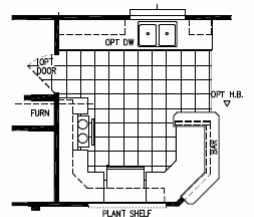
INFORMATION ON THIS LITERATURE MAY VARY FROM THE ACTUAL HOME. WE RESERVE THE RIGHT TO MAKE CHANGES AT ANY TIME, WITHOUT NOTICE OR OBLIGATION.



### OPT DEN/OFFICE



### OPT ISLAND KITCHEN



### OPT KITCHEN "B"

# *Chandler Series by Genesis-- Standard Features*

## **General Construction**

- 3/12 pitch fixed roof
- 15/32" roof sheathing
- 8' side walls & 10' centerline
- Vaulted textured ceiling T/O
- ½" sheet rock walls and ceiling
- ¾" T&G OSB floor decking
- 2x10 open web floor joists on 16" centers
- 2x4 exterior walls on 16" centers
- Modular approved headers and ridge beams
- 2x10 rim joists
- Shut off valves T/O
- Down draft furnace w/floor ducts installed
- Copper wiring
- 200 Amp Electric service
- Insulation – R-13 sidewall, R-33 Roof
- Dual pane vinyl grid windows
- 30 gal electric water heater
- Washer/Dryer hook ups
- Removable carrier system for transportation
- 30 lb. Roof load rating

## **Baths**

- Power exhaust fan in each bath
- Beveled edge medicine cabinet
- Elongated water saver toilets
- Single lever faucets
- One piece tubs and showers
- Tub drape in 2<sup>nd</sup> bath
- Deluxe lighting
- Drawer bank in most master baths

## **Exterior**

- "Smart Panel" wood siding
- Cem-Plank fiber cement eaves and soffits
- 6" fixed eaves sidewalls
- 12" front and rear eaves
- Vented soffit all around
- Porch light at each door

## **Interior**

- Decorative drapes and blinds in Lr & Dr
- 2" blinds & valances on all other windows except baths
- Plush carpet and re-bond pad shipped loose
- Textured & painted walls and ceiling
- Chandelier in D/R
- Designer lighting T/O
- 4" baseboard molding T/O
- Heavy duty door jambs w/mortised hinges
- 6-panel molded interior doors
- Vinyl flooring by Congoleum all wet areas
- O/H utility cabinets
- Block & wire for 1 ceiling fan L/R

## **Kitchens**

- Raised panel cabinet doors w/ hidden hinges
- Drawer over door system
- 30" overhead cabinets
- 30" gas range
- 3" exhaust range hood
- Laminated counters w/ 4" backsplash
- Adjustable overhead shelves
- Center shelf in base cabinets
- 9" deep porcelain sink w/single lever faucet & sprayer

Applicable Codes Vary by State ----

### California:

- Building Code 2001 CBC
- Plumbing Code 2001 CPC
- Mechanical Code 2001 CMC
- Electric Code 2004 CEC
- Energy Code 2005 CBC Chapters 2 & 11A

### Arizona:

- Building Code 2003 IBC
- Plumbing Code 1994 UPC
- Mechanical Code 2003 IMC
- Electric Code 2002 NEC
- Energy Code ASHRAE 90.1
- Life Safety NFPA

Nevada and New Mexico currently pending