



AMERICANA



Generous space for family or guests alike. Master bedroom suite with private bath, plus an additional two bedrooms and a full bath. Spacious kitchen with convenient adjoining utility room and pantry, plus a large dining room and living room complement your casual lifestyle or formal entertaining.

## THE BUCKEYE

- 1,809 sq. ft.
- 3 bedrooms, 2 baths
- Wrapped porch
- Island cook-top kitchen
- Huge walk-in pantry



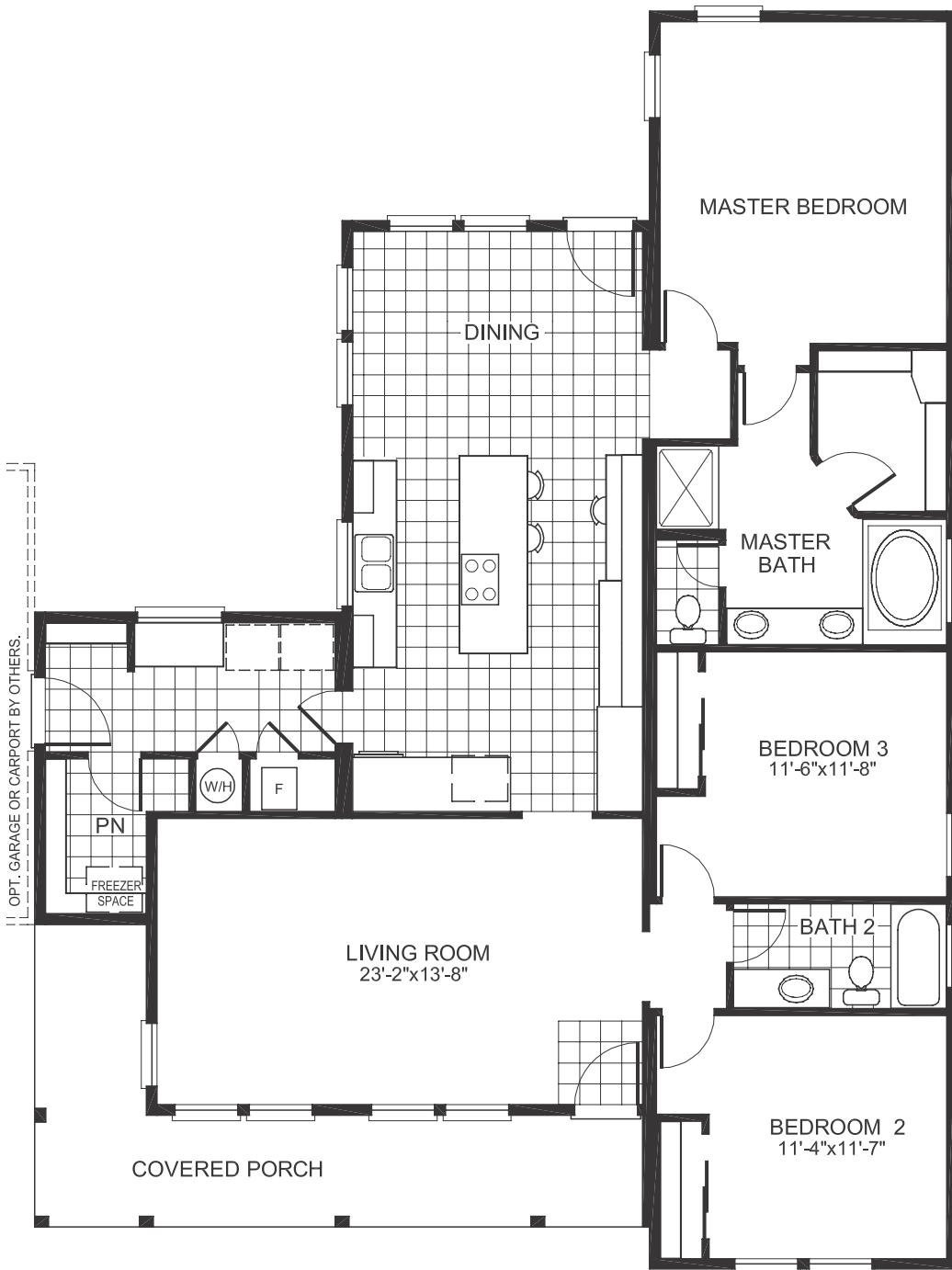
CRAFTSMAN



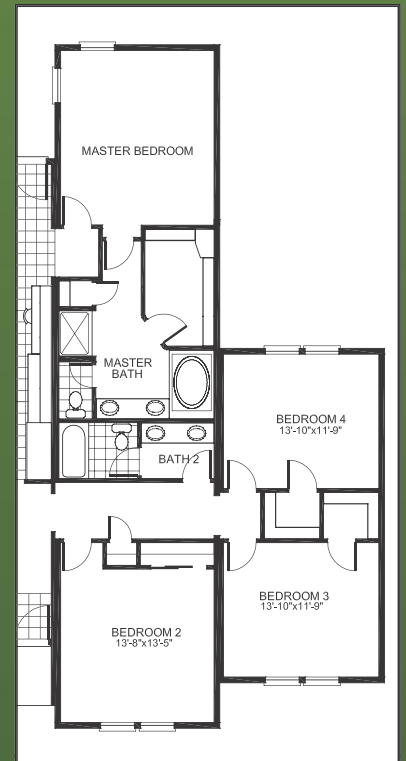
AMERICANA 4 BR WITH GARAGE

\* Exterior choices may effect home price.

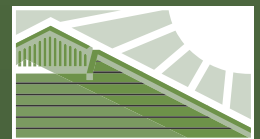
# THE BUCKEYE



**1,809 sq. ft.**  
**Dimensional area: 44' X 60'**  
**Model: dcw3 60T7**



**4 Bedroom Option**  
**2,239 sq. ft.**  
**Dimensional area: 59' X 60'**



**DISCOVERY**  
 CUSTOM HOMES

A DIVISION OF **Palm Harbor Homes**